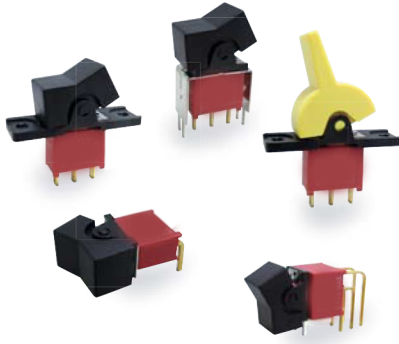


# 3A SERIES

SEALED MINIATURE ROCKER & PADDLE SWITCH



IP 67  
ACCORDING TO  
EN 60529:1991+A1:2001  
IEC 60529:2001

UL US  
E 187490

RoHS  
compliant

Pb  
lead-free

## SPECIFICATIONS

**CONTACT RATING:** Dependent upon contact material  
**MECHANICAL LIFE:** 30,000 make-and-break cycles.  
**CONTACT RESISTANCE:** 10 mΩ max. initial @ 2-4VDC  
 100mA for both silver and gold plated contacts.  
**INSULATION RESISTANCE:** 1,000 MΩ min.  
**DIELECTRIC STRENGTH:** 1,000 Vrms min.@sea level.  
**OPERATING TEMPERATURE:** -30°C to 85°C.

## MATERIALS

**CASE & BUSHING :** Glass filled nylon 6/6, flame retardant, heat stabilized (UL94V-0).  
**ACTUATOR:** Nylon, black std. Internal O-ring seal standard with all actuators.  
**SWITCH SUPPORT:** Brass or steel, tin plated.  
**ACTUATOR PIVOT & MOUNTING BRACKET:** Nylon.  
**ACTUATOR PIVOT RETAINER:** Stainless steel.  
**TERMINAL/CONTACT:** Silver or gold plated copper alloy.

## SWITCH FUNCTION

NO. POLES	UL/CSA MODEL NO.	MODEL NO.	SWITCH FUNCTION			CONNECTED TERMINALS / SCHEMATIC		
			POS.1	POS.2	POS.3	POS.1	POS.2	POS.3
SP	Q13A11	3AS1	ON	NONE	ON	2-3	N/A	2-1
	Q13A12	3AS2	ON	NONE	MOM			
	Q13A13	3AS3	ON	OFF	ON			
	Q13A14	3AS4	MOM	OFF	MOM		OPEN	
	Q13A15	3AS5	ON	OFF	MOM			
DP	Q13A21	3AD1	ON	NONE	ON	2-3,5-6	N/A	2-1,5-4
	Q13A22	3AD2	ON	NONE	MOM			
	Q13A23	3AD3	ON	OFF	ON		OPEN	
	Q13A24	3AD4	MOM	OFF	MOM			
	Q13A25	3AD5	ON	OFF	MOM			
	▲ Q13A26	3AD6	ON	ON	ON	2-3,5-6	2-3,5-4	2-1,5-4
	▲ Q13A27	3AD7	MOM	ON	MOM			
	Q13A28	3AD8	ON	ON	MOM			
3P	Q13A31	3A31	ON	NONE	ON	2-3,5-6,8-9	N/A	2-1,5-4,8-7
	Q13A32	3A32	ON	NONE	MOM			
	Q13A33	3A33	ON	OFF	ON		OPEN	
	Q13A34	3A34	MOM	OFF	MOM			
	Q13A35	3A35	ON	OFF	MOM			

MOM=MOMENTARY

▲ Please check the availability in advance before order

# 3A SERIES

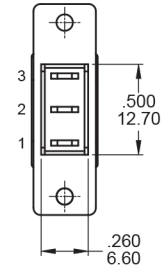
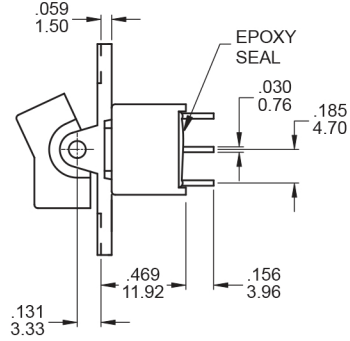
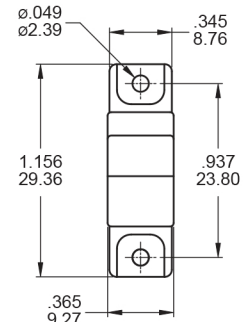
SEALED MINIATURE ROCKER & PADDLE SWITCH



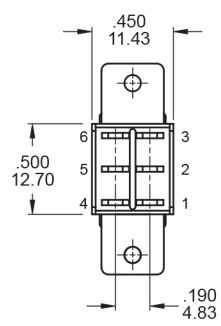
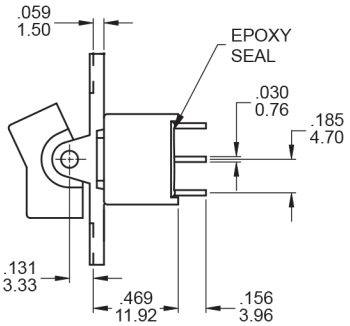
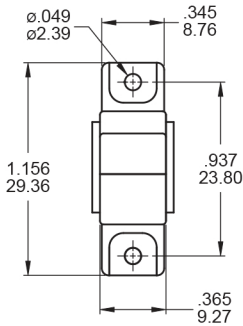
## POLE OPTIONS



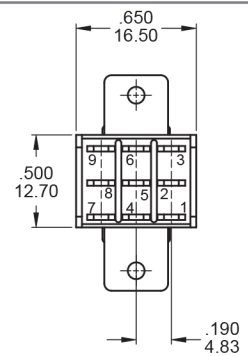
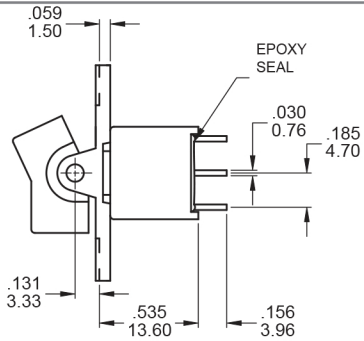
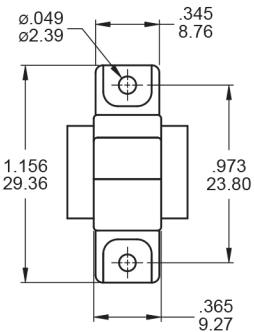
SPDT



DPDT

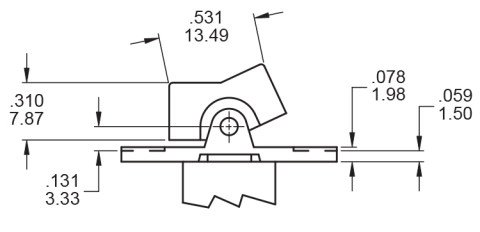
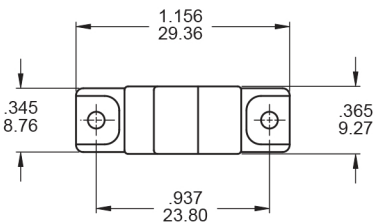


3PDT



## ACTUATOR OPTIONS FOR PANEL MOUNT ONLY

R1

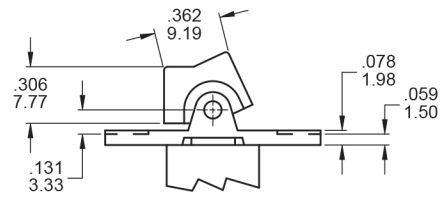
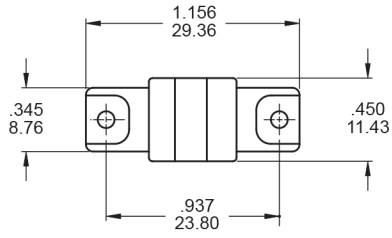


# 3A SERIES

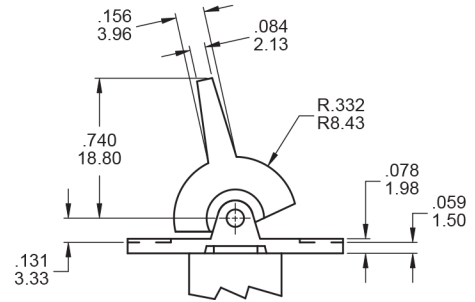
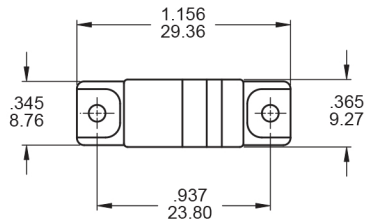
SEALED MINIATURE ROCKER & PADDLE SWITCH



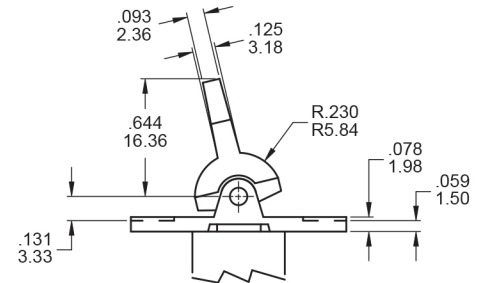
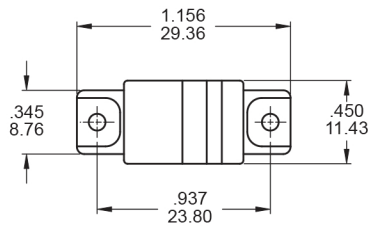
## R11



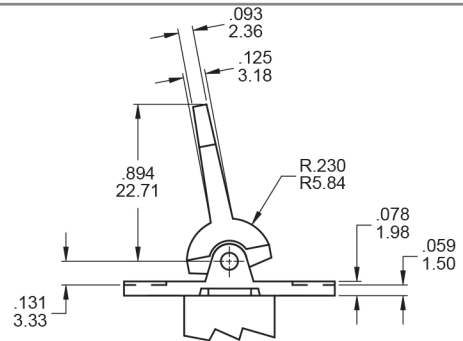
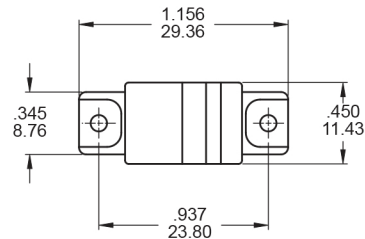
## R2



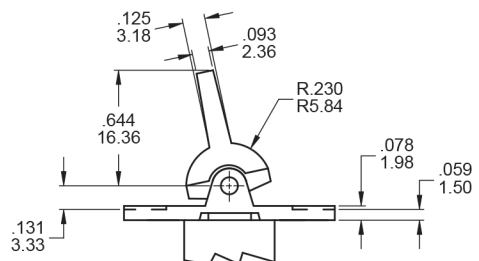
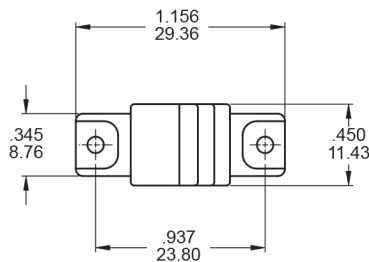
## R12



## R13



## R16

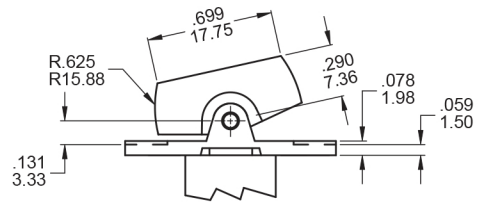
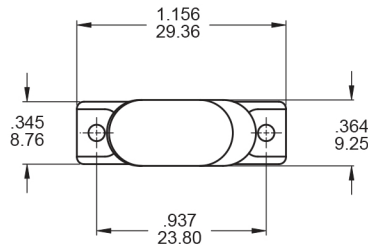


# 3A SERIES

SEALED MINIATURE ROCKER & PADDLE SWITCH

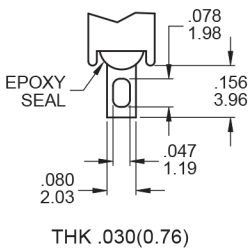


RB

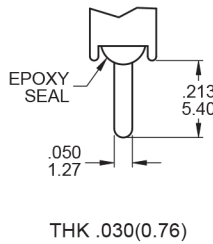


## TERMINATION OPTIONS

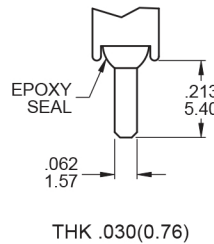
**M1** Solder lug



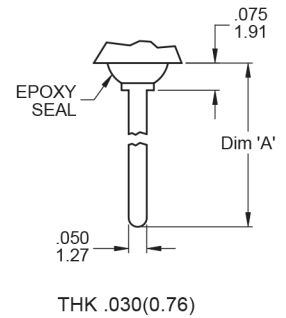
**M2** PC Thru-hole



**M3** Quick connect



**M5** Wire Wrap



## OTHER TERMINATION OPTIONS

**M6** Right angle P.C. Mount

**M6N** Right angle P.C. Mount with snap-in bracket

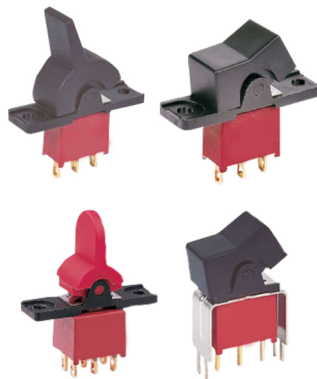
**M7** Right angle P.C. Mount

**VS2** Vertical bracket P.C. Mount

**V2N** Vertical bracket P.C. Mount with snap-in bracket

**VS3** Vertical bracket P.C. Mount

OPTION CODE	DIM. 'A'
M51	.736 (18.70)
M52	.953 (24.20)
M53	.415 (10.55)
M54	1.062 (26.97)





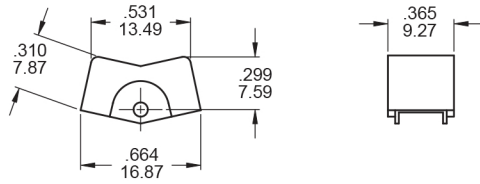
# 3A SERIES

SEALED MINIATURE ROCKER & PADDLE SWITCH

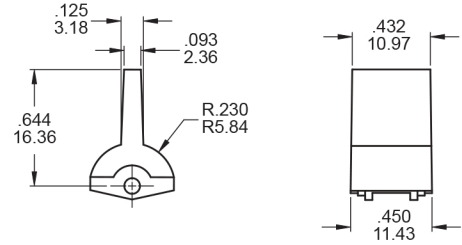


## ACTUATOR OPTIONS FOR P.C. MOUNT ONLY

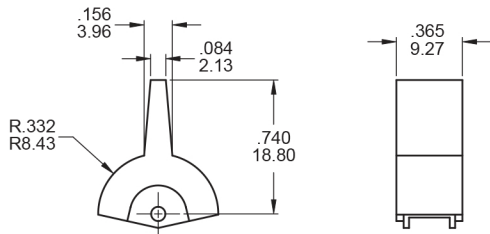
J1



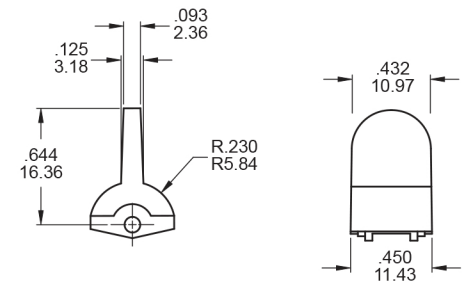
J6



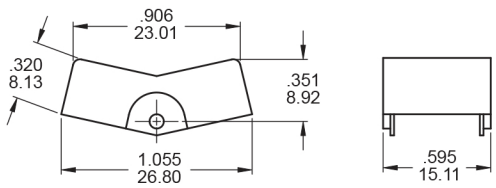
J2



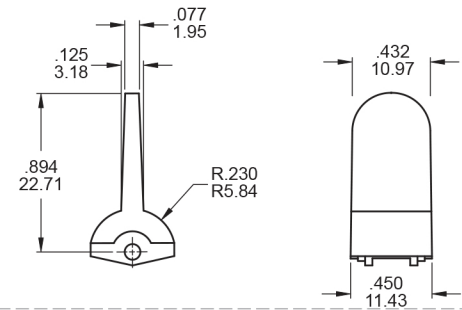
J7



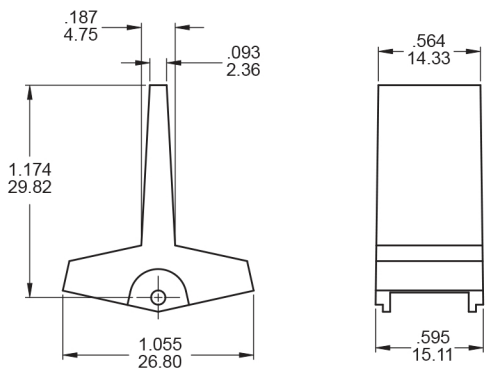
J3



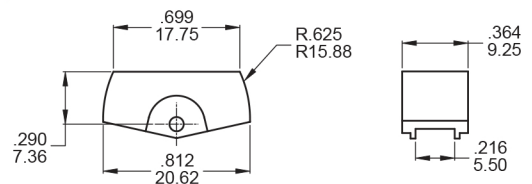
J8



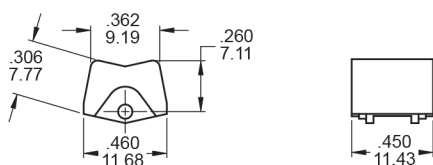
J4



JB



J5

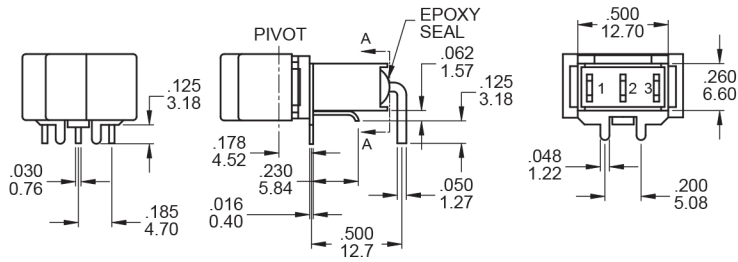


# 3A SERIES

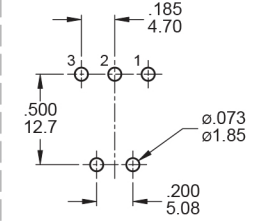
SEALED MINIATURE ROCKER & PADDLE SWITCH



M6



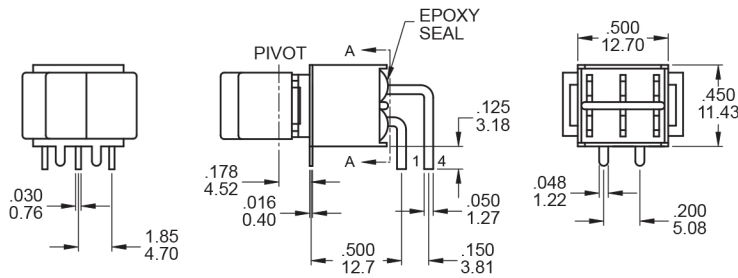
P.C. MOUNTING



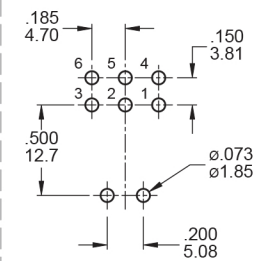
SECTION A-A  
TERM.NOS.FOR  
REFERENCE ONLY

SPDT

M6



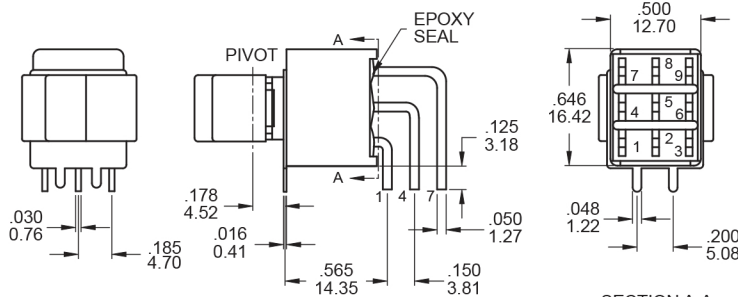
P.C. MOUNTING



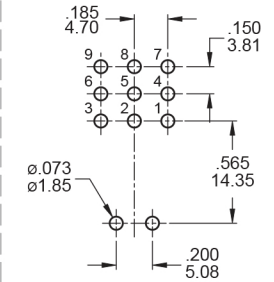
SECTION A-A  
TERM.NOS.FOR  
REFERENCE ONLY

DPDT

M6



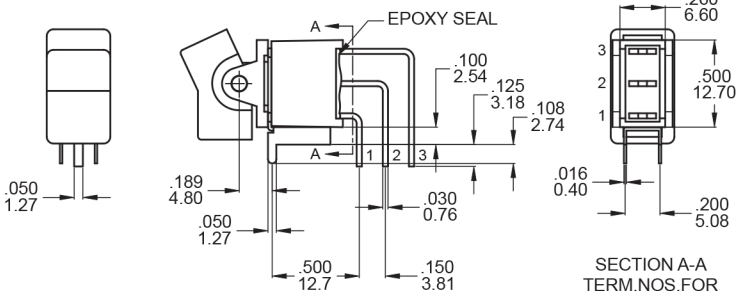
P.C. MOUNTING



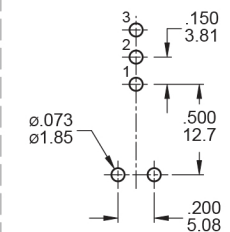
SECTION A-A  
TERM.NOS.FOR  
REFERENCE ONLY

3PDT

M7



P.C. MOUNTING



SECTION A-A  
TERM.NOS.FOR  
REFERENCE ONLY

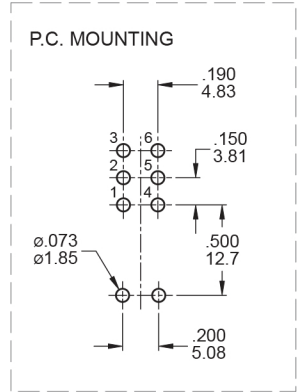
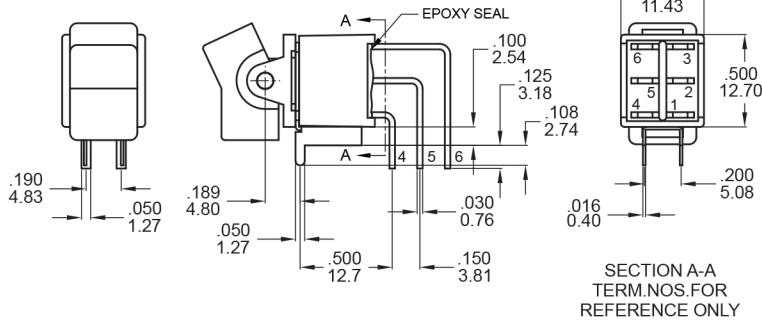
SPDT

# 3A SERIES

SEALED MINIATURE ROCKER & PADDLE SWITCH

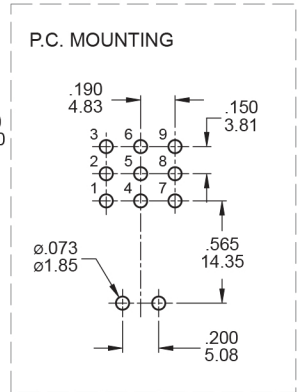
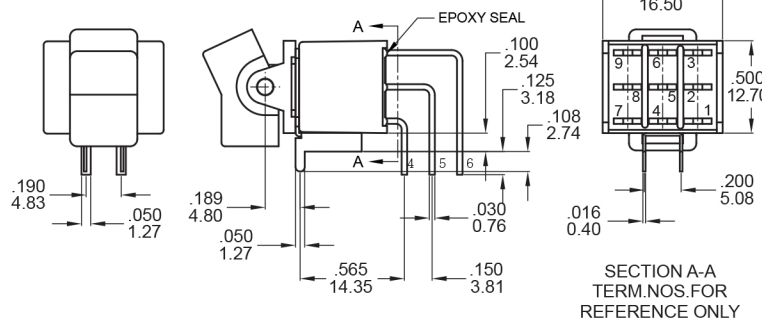
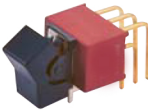


## M7



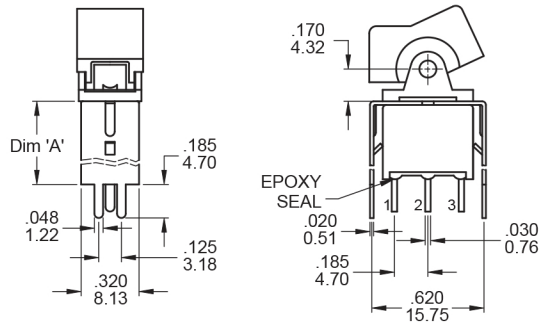
## DPDT

## M7

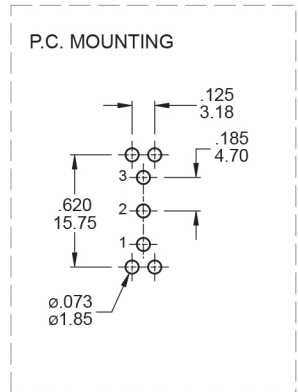


## 3PDT

## VS2 - VS3

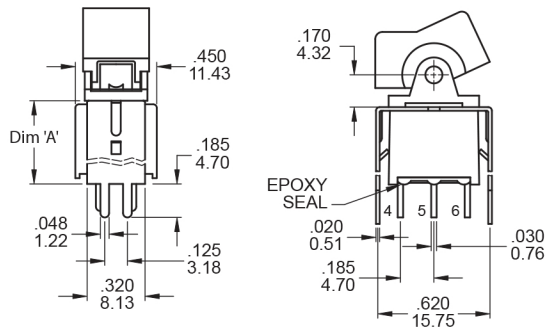


OPTION CODE	DIM. 'A'
VS2	.460 11.68
VS3	.630 16.00

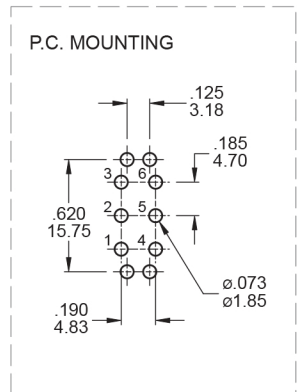


## SPDT

## VS2 - VS3



OPTION CODE	DIM. 'A'
VS2	.460 11.68
VS3	.630 16.00



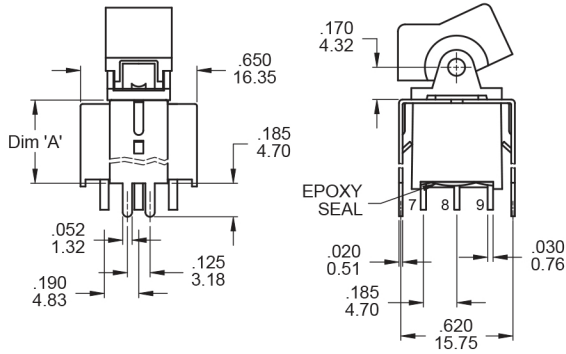
## DPDT

# 3A SERIES

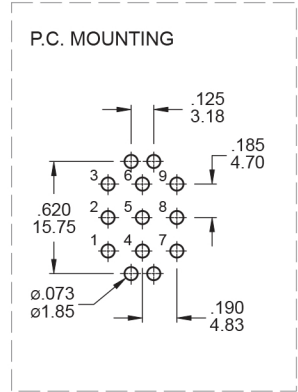
SEALED MINIATURE ROCKER & PADDLE SWITCH



VS2 - VS3



OPTION CODE	DIM. 'A'
VS2	.460 11.68
VS3	.630 16.00

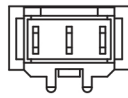
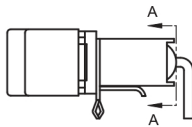


3PDT

## SNAP-IN TERMINATION OPTIONS

M6N

V2N



SECTION A-A



## CONTACT MATERIAL OPTIONS

	CONTACT PLATING	TERMINAL PLATING	RATINGS
Q	Silver	Q = Gold flash over silver	5 Amps with resistant load @ 120VAC or 28VDC 2 Amps with resistant load @ 250VAC
C	Gold over Silver	C = Gold over silver	
R	Gold	R = Gold	0.4 Volt - Amps ( VA ) max. @ 20V max. ( AC or DC )

## SOLDERING PROCESSES

**MANUAL SOLDERING:** Use soldering iron of 30 watts, controlled at 350°C approximately 5 seconds while applying solder.

**WAVE SOLDERING:** Recommended Soldering Temperature: 270 ± 5°C

Duration of Solder Immersion: Max 5 sec. (PCB is 1.6mm in thickness)