

LS SERIES

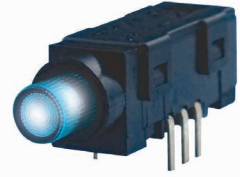
LED PUSH BUTTON SWITCH

Feature :


- Bi-color LED illuminated available
- SPST
- Lock / non-lock function

Application :

- Computer products
- Office appliance
- Communication equipments

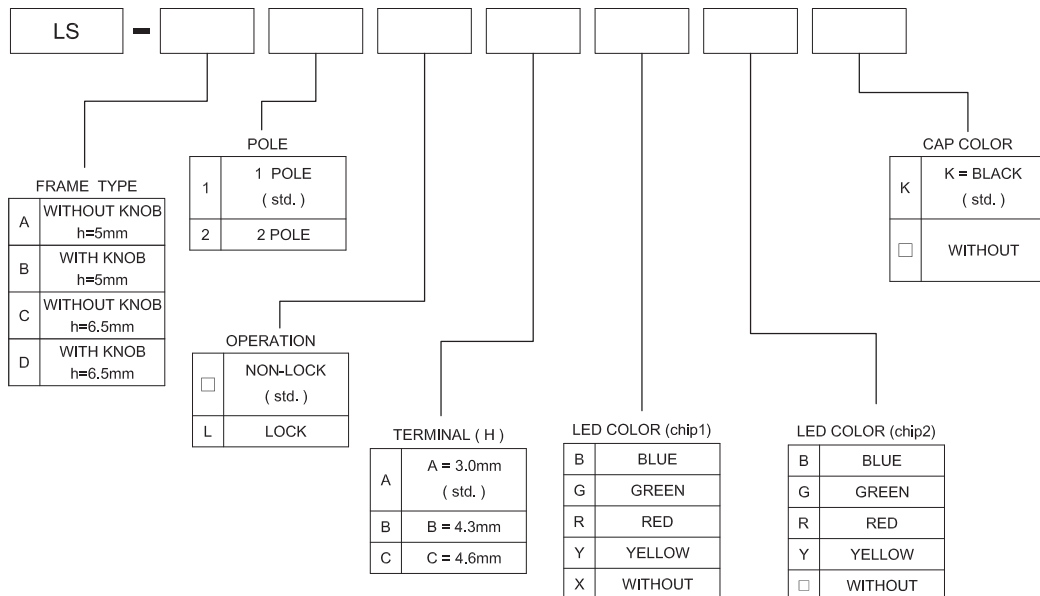


SWITCH SPECIFICATIONS	
POLE - POSITION	Momentary Type , LOCK Type with LED
CONTACT RATING	36 V DC , 0.2 A
CONTACT RESISTANCE	40 mΩ MAX. 1.5 V DC ; 100 mA , by Method of Voltage DROP
INSULATION RESISTANCE	100 MΩ MIN. 500 V DC
DIELECTRIC STRENGTH	Breakdown is not Allowable ; 500 V AC for 1 Minute
OPERATING FORCE	NON-LOCK TYPE : 1POLE : 200±100 gf ; 2POLE : 300±100 gf LOCK TYPE : 1 & 2 POLE : 300 ± 100 gf
OPERATING LIFE	10,000 cycles
OPERATING TEMPERATURE RANGE	-40°C ~ 85°C
TOTAL TRAVEL	FULL TRAVEL : 2.4 ± 0.3 mm CONTACT TRAVEL : 1.6 ± 0.3 mm

LED SPECIFICATIONS								
ATTENTION LEDs are Electrostatic Sensitive devices  (+) ○ (-)	Unit	Value / LED Color						
		Blue	Pure Green	Red	Yellow	Orange	Green	White
LUMINOUS INTENSITY@20mA I _v	mcd	900	6500	900	1300	900	400	1200
Dominant Wavelength λ _D	nm	470	525	635	590	601	570	/
FORWARD VOLTAGE@20mA V _f	V	3.2	3.3	1.95	2	2.1	2.1	4

■ A single bin cannot be ordered, please contact us in advance if you need a particular bin sorting before placing your order to clarify the lead time, MOQ and pricing

► HOW TO ORDER

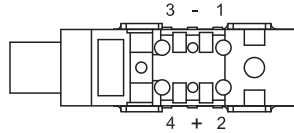
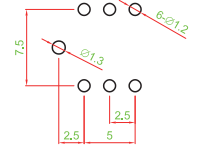
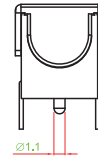
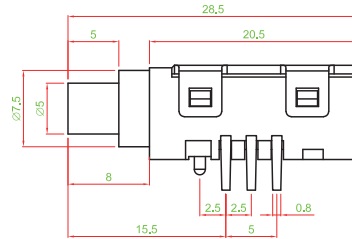
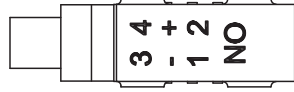
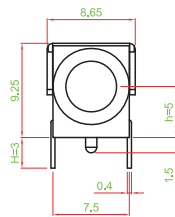
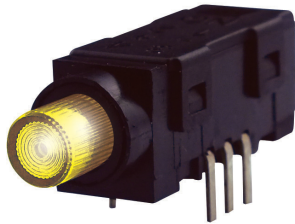


LS SERIES

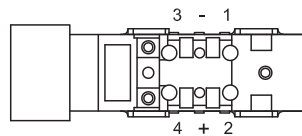
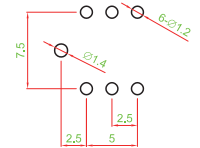
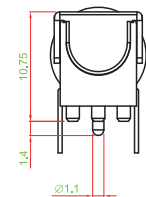
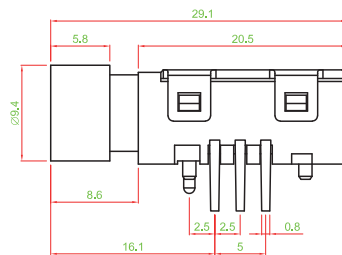
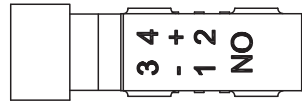
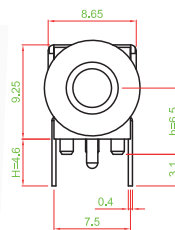
LED PUSH BUTTON SWITCH

► DIMENSION

LS - A1A □ □



LS - D1C □ □ K



► CIRCUIT

