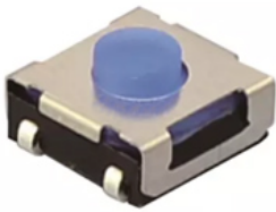


# RJS-TACT-D43-IP67

TACT SWITCH



On/off smd tactile switch that is only on when the button is pressed or if there is a definitive change in pressure.

Waterproof Degree:	IP67	Operating force:	180/250±30gf
Operating Direction:	Top Push	Travel:	0.25mm
Operating Life:	Over 100,000 cycles	Initial contact resistance:	100mΩ max.
Stem height:	H=3.5mm	Operating Temperature:	-25°C~+105°C
Rating (max.):	50mA 12V DC	Rating (min.):	10μA 1V DC
SPQ:	1,000pcs	OEM or ODM:	Available

Operating Force	Operating orientation	Travel	Ratings(max)	(5mA 5V DC)	Contact Resistance	PCS
160gf	Direct press	0.25	50mA 12V DC	5x10 <sup>4</sup>	100mΩ max	1000
250gf				3x10 <sup>4</sup>		

Size	Installation Diagram And Circuit					
<table border="1"> <thead> <tr> <th>H</th> </tr> </thead> <tbody> <tr> <td>3.1</td> </tr> <tr> <td>3.5</td> </tr> <tr> <td>4.3</td> </tr> <tr> <td>5.0</td> </tr> </tbody> </table>	H	3.1	3.5	4.3	5.0	
H						
3.1						
3.5						
4.3						
5.0						