

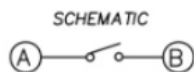
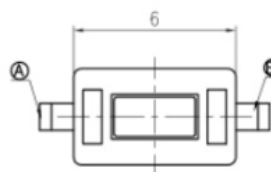
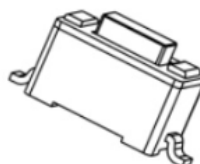
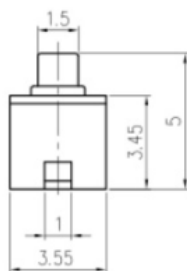
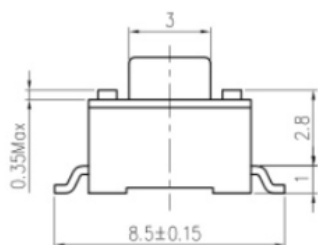
# RJS-TACT-D8-H

TACT SWITCH

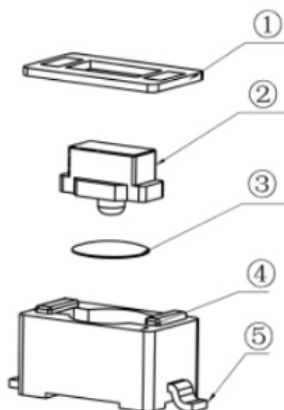


on/off electronic SMD tactile push button switch that is only on when the button is pressed or if there is a definitive change in pressure. It was used for circuit board, the height for the switch has 4.3 or 5.0mm.

Type:	Snap-in	Operating force:	250±50gf
Operating Direction:	Top Push	Travel:	0.25mm
Operating Life:	Over 50,000 cycles	Initial contact resistance:	100mΩ max.
Stem color:	Black/White	Operating Temperature:	-25°C~+105°C
Stem height:	H=4.3/5.0mm	Series type:	SMD type
Rating (max.):	50mA 12V DC	Rating (min.):	10μA 1V DC
SPQ:	1,000pcs	OEM or ODM:	Available



Recommended P.C.B layout



1. Rating:DC12V 50mA.
2. Travel:0.2±0.1mm.
3. Operating Force:180±50gf
4. Contact Resistance:100mΩMax.
5. Life:30,000 Cycles.