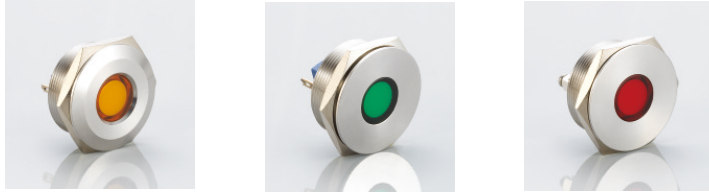


# RJS01-28I SERIES

LED INDICATOR



## Lamp Ratings

Lamp Type	LED lamp(AC/DC)
Rated Voltage	3V,5V,12V,24V,36V,48V,110V,220VAC/DC
Rated Current	About 15mA About 2mA
LED Color	<span style="color:red">R</span> <span style="color:green">G</span> <span style="color:yellow">Y</span> <span style="color:orange">O</span> <span style="color:blue">B</span> <span style="color:white">W</span>
Life	40000 hours(Reference)
Lamp Circuit diagram	<p>Using AC/DC LED lamp, the terminals have no difference of anode and cathode</p>

## Technical Specifications

LED Voltage	Operating Voltage Vop(Min to Max)	Operating Current Iop(Typical All Typs)
2VDC(No Resistor)	1.8-2.5VDC	20mA
12VDC	10.8-13.2VDC	20mA
24VDC	21.6-26.4VDC	20mA
28VDC	25.2-30.8VDC	20mA
110VAC	99-121VDC	6mA
230VAC	207-253VDC	3mA

Intensity(Typical) at Iop Standard	Prominent ( all voltages )	Flush ( all voltages )
Red	7,500mcd	2000mcd
Green	4,100mcd	250mcd
Yellow	2,500mcd	350mcd
Blue	1,300mcd	300mcd
White	1,900mcd	200mcd

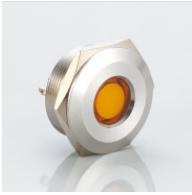
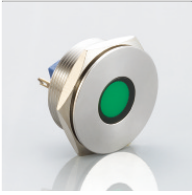
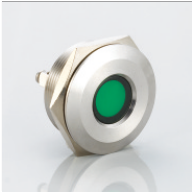

Luminous intensity will be reduced with lower operating current.

Max Reverse Voltage	5V
Viewing Angle	100°(dependant on mode)
Life Expectancy	50,000 hours
Operating Temperature Range	-40~+85°C

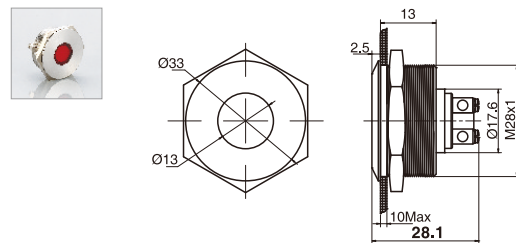
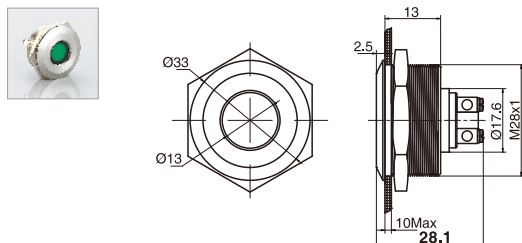
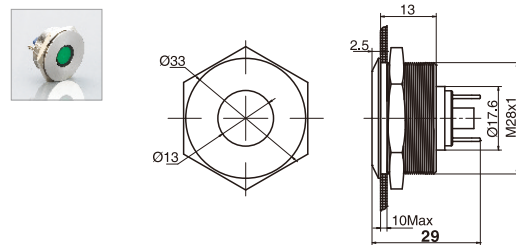
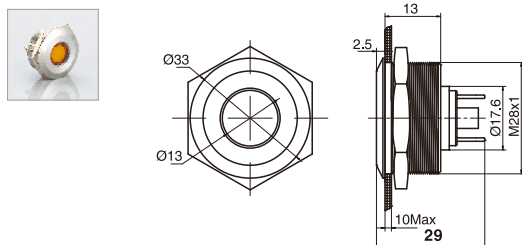
# RJS01-28I SERIES

LED INDICATOR



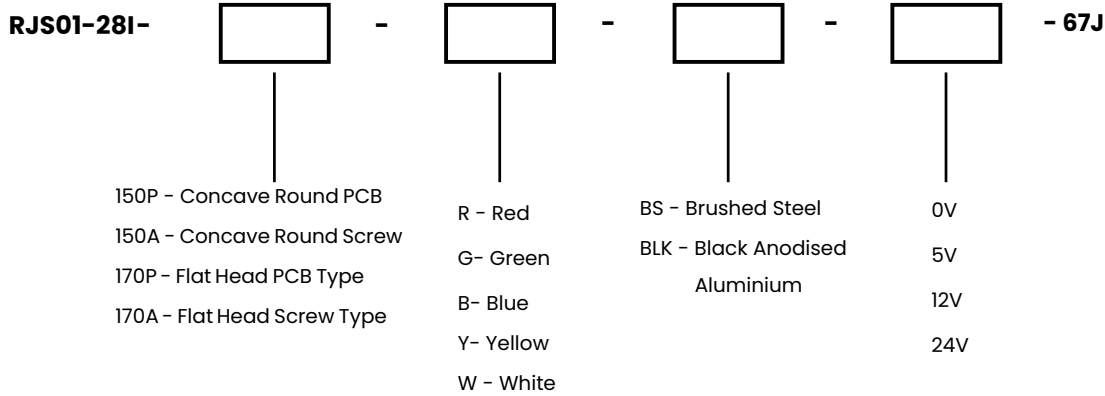
Appearance	Shape of top	Install Style	Model	Color	Voltage	Material
	Concave round	PCB Type	<b>RJS01-28I-150P~67J</b>	<ul style="list-style-type: none"> <li><span style="color: red;">■</span> Red</li> <li><span style="color: green;">■</span> Green</li> <li><span style="color: blue;">■</span> Blue</li> <li><span style="color: white;">■</span> White</li> <li><span style="color: yellow;">■</span> Yellow</li> </ul>	Non-resisted (0V) 5V 12V 24V	Brushed Steel Anodised Aluminium
	Flat round	PCB Type	<b>RJS01-28I-170P~67J</b>			
	Concave round	Screw Type	<b>RJS01-28I-150A~67J</b>			
	Flat round	Screw Type	<b>RJS01-28I-170A~67J</b>			

## Dimensions



# RJS01-28I SERIES

LED INDICATOR



**EXAMPLE:** RJS01-28I-170A-R-BS-12V-67J