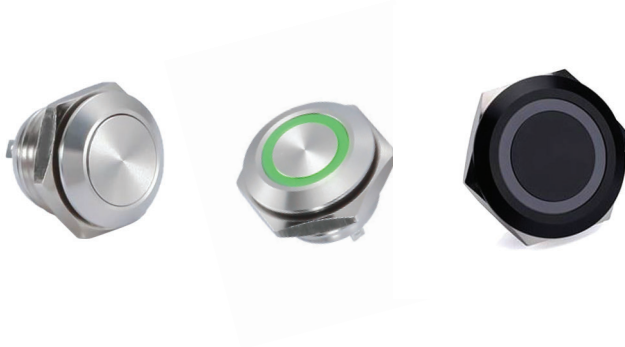


RJS1N1LP SERIES

LOW PROFILE SWITCH



Specifications

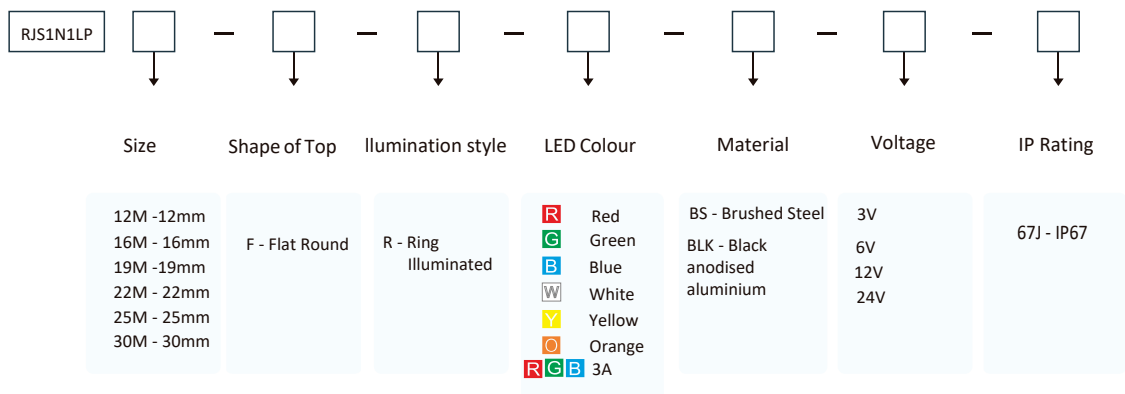
Degree of Protection	IP67
Contact Type	1 NO
Rated Voltage	DC36V
Rated Current	2A
Minimum Applicable Load	3V AC/DC, 1mA
Contact material	Silver plated
Operating Temperature	-25° to +55°C
Operating Humidity	45 to 85% RH
Contact Resistance	≤50mΩ
Insulation Resistance	≤50mΩ
Vibration Resistance	10 to 55Hz, amplitude 1.2mm p-p
Degree of Protection	>10g
Electrical Life	200,000 operations minimum (at full rated load)
Mechanical Life	1,000,000 operations minimum
Dielectrical Life	Switch Unit: 2,000V AC, 1 min. between live/dead part and terminals of different poles; 1,000V AC, 1 minute between terminals of the same pole; 1,500V AC, 1 minute between contact and lamp terminals. Illumination Unit: 2,000V AC, 1 min. between live part/ground
Connection Form	Foot welding
Soldering Temperature	20W/5 seconds or 260°C/3 seconds
Tightening Torque	5-14N.m
Action Stroke	≤0.5mm
Action Force	≤3N

RJS1N1LP SERIES

LOW PROFILE SWITCH



How to Order

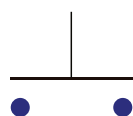


30mm only available as illuminated

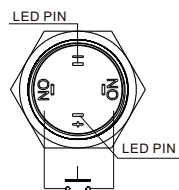
Lamp Ratings

Lamp Type	LED lamp(DC)
Rated Voltage	3V,6V,12V,24V
Rated Current	Aprox 15 - 20mA
LED Color	R G Y O B W R G B
Life	50000 hours(Reference)
Lamp Circuit diagram	<p>Built in resistors; use 0603 patch beads.</p>
Power	0.06W
Chromogenic index	60-70
Luminous flux	80-100mcd(lm)
Forward voltage	2.0-3.2V
Reverse voltage	3V
(ESD) Electrostatic breakdown voltage	3000V
Rated current	0.006A
Lighting angle	120°
Luminous efficiency	110(lm/W)
thermal resistance	≤50°C/W
Maximum allowable junction temperature	120°C
Ageing time	1000 hours of conventional aging 100%; 6000 hours conventional aging 98%

Contact Diagram



Contact Style








Terminal Description

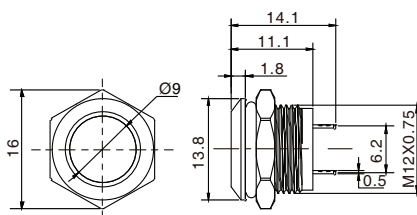
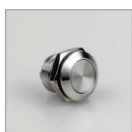
RJS1N1LP SERIES

LOW PROFILE SWITCH

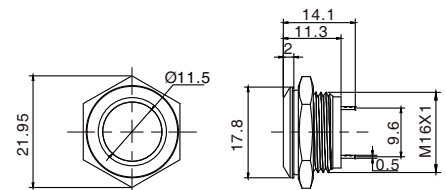


Product appearance	Illuminated type	Operation	Contact	Model	Material
	Without LED	Momentary	1NO	RJS1N1LP-12M	Brushed Steel Black Anodised Aluminium
	Without LED	Momentary	1NO	RJS1N1LP-16M	
	Without LED	Momentary	1NO	RJS1N1LP-19M	
	Without LED	Momentary	1NO	RJS1N1LP-22M	
	Without LED	Momentary	1NO	RJS1N1LP-25M	

RJS1N1LP-12M



RJS1N1LP-16M

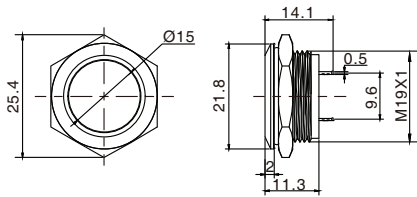


RJS1N1LP SERIES

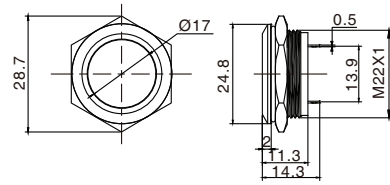
LOW PROFILE SWITCH



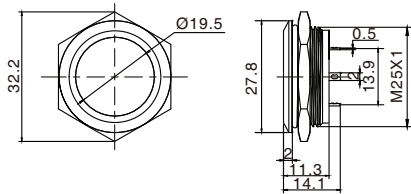
RJS1N1LP-19M






RJS1N1LP-22M



RJS1N1LP-25M




RJS1N1LP WITH LED

Product appearance	Illuminated Type	Operation	Contact	Model	Colour	Voltage	Material
	Ring illumination	Momentary	1NO	RJS1N1LP-12M	R Red G Green Y Yellow W White B Blue O Orange RGB 3A	3V 6V 12V 24V	Brushed Steel Black Anodised Aluminium
	Ring illumination	Momentary	1NO	RJS1N1LP-16M			
	Ring illumination	Momentary	1NO	RJS1N1LP-19M			

RJS1N1LP SERIES

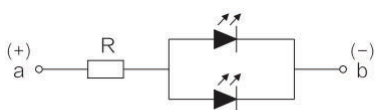
LOW PROFILE SWITCH



Product appearance	Install Style	Operation	Contact	Model	Colour	Voltage	Material
	PCB Type	Momentary	1NO	RJS1N1LP-22M	<ul style="list-style-type: none"> R Red G Green Y Yellow W White B Blue O Orange RGB 3A 	3V 6V 12V 24V	Brushed Steel Black Anodised Aluminium
	PCB Type	Momentary	1NO	RJS1N1LP-25M			
	PCB Type	Momentary	1NO	RJS1N1LP-30M			

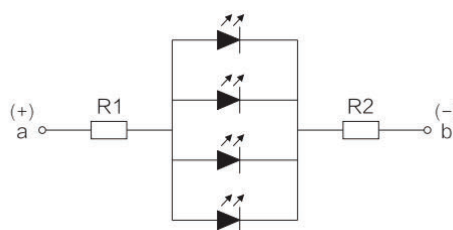
Lamp Line Diagram

Single / Bi-colour



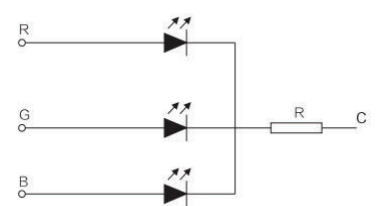
12mm / 16mm / 19mm

Single / Bi-colour



22mm / 25mm

RGB (3A)



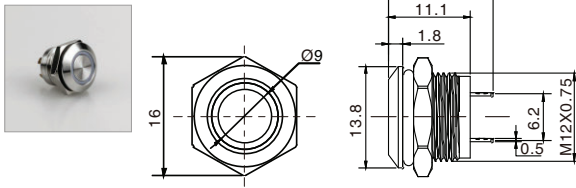
30mm

RJS1N1LP SERIES

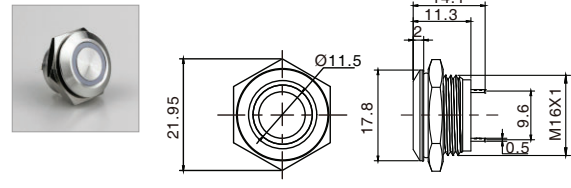
LOW PROFILE SWITCH



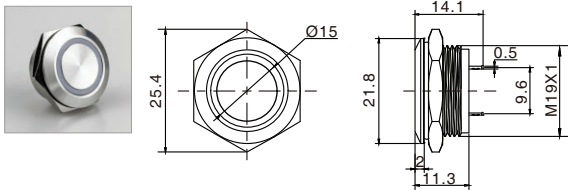
RJS1N1LP-12M



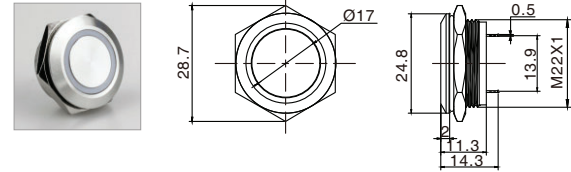
RJS1N1LP-16M



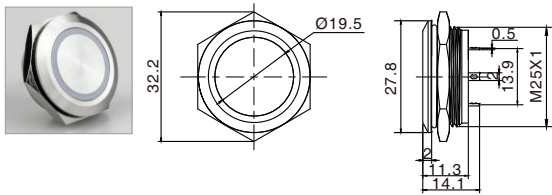
RJS1N1LP-19M



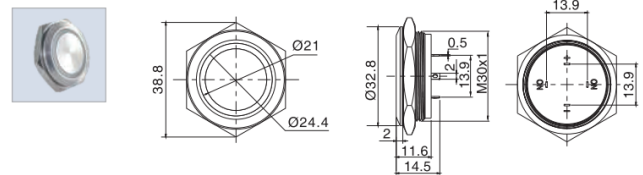
RJS1N1LP-22M



RJS1N1LP-25M



RJS1N1LP-30M



RJS1N1LP-30M RGB (3A)

