

RJS1N1S-16 SERIES

METAL PUSH BUTTON SWITCH



Technical Parameter

Degree of Protection	IP67
Contact Type	1 NO
Maximum Voltage	250V AC/DC
Thermal Current	2A
Minimum Applicable Load	5V AC/DC, 1mA
Contact material	Silver plated
Terminal Style	.110" Solder / Quick Connect
Operating Temperature	-25°C to +55°C
Operating Humidity	45 to 85% RH
Contact Resistance	50mΩ maximum
Insulation Resistance	100mΩ minimum (500VDC megger)
Vibration Resistance	10 to 55Hz, amplitude 1.5mm p-p
Degree of Protection	>10g
Electrical Life	100,000 operations minimum (at full rated load)
Mechanical Life	Momentary: 1,000,000 operations minimum
Dielectrical Life	Switch Unit: 2,000V AC, 1 min. between live/dead part and terminals of different poles; 1,000V AC, 1 minute between terminals of the same pole; 1,500V AC, 1 minute between contact and lamp terminals. Illumination Unit: 2,000V AC, 1 min. between live part/ground
Soldering Temperature	20W/5 seconds or 260°C/3 seconds

Contact Ratings

Rated insulation voltage		250V			
Heating current I _{th}		3A Temperature does not exceed the maximum allowed current			
Rated voltage		24V	110V	220V	
Rated current	AC 50/60Hz	Resistive load	2A	1A	0.5A
		Inductive load	-	-	-
	DC	Resistive load	0.7A	0.2A	0.1A
		Inductive load	-	-	-
Contact material		Silver nickel oxide			

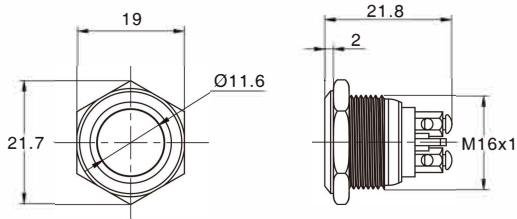
RJS1N1S-16 SERIES

METAL PUSH BUTTON SWITCH

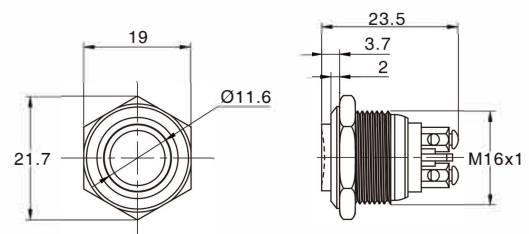


Product appearance	Illuminated type	Operation	Contact	Model	Material
<p>Flat round</p> 	Without LED	Momentary	1NO	RJS1N1S-16-F-BS	BS - BRUSHED STEEL BLK - BLACK ANODISED CUSTOM FINISHES (subject to MOQ's)
<p>High round</p> 	Without LED	Momentary	1NO	RJS1N1S-16-H-BS	
<p>Ball head round</p> 	Without LED	Momentary	1NO	RJS1N1S-16-B-BS	

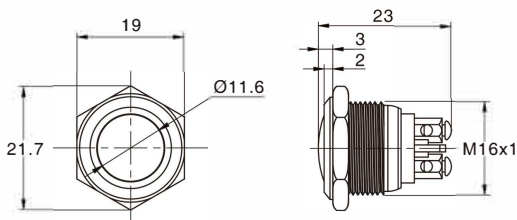
RJS1N1S-16-F-BS



RJS1N1S-16-H-BS



RJS1N1S-16-B-BS



Wiring available subject to MOQ*
 Contact us for more information
 +44 (0)1234 213600 | sales@rjselectronics.com

