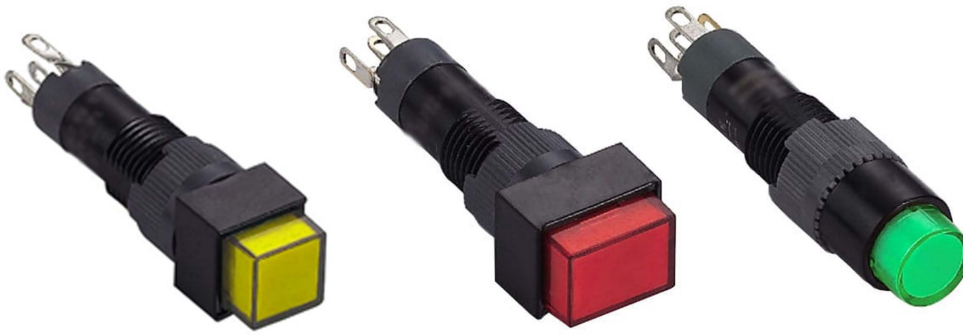


RJSPS8A SERIES

PUSH BUTTON SWITCH



Specifications

Degree of Protection	IP 40 Watertight /Oiltight
Contact Configuration	Single Pole, Double Pole
Maximum Voltage	250V AC/DC
Thermal Current	3A
Minimum Applicable Load	5V AC/DC, 1mA
Contact Material	Gold-plated silver
Terminal Style	.110" Solder/Quick Connect
Operating Temperature	-25°C to +55°C
Operating Humidity	45 to 85% RH
Contact Resistance	50MΩ maximum
Insulation Resistance	100MΩ minimum (500V DC megger)
Vibration Resistance	10 to 55Hz, amplitude 1.2mm p-p
Degree of Protection	>10g
Electrical Life	100,000 operations minimum (at full rated load)
Mechanical Life	Maintained: 1,000,000 operations minimum Momentary: 1,000,000 operations minimum Selectr /Keylock: 250, 000 operations minimum
Dielectric Strength	Switch Unit: 2,000V AC, 1min. between live/dead part and terminals of different poles; 1,000V AC, 1 minute between terminals of the same pole; 1,500V AC, 1 minute between contact and lamp terminals. Illumination Unit: 2,000V AC, 1min. between live Part/ground
Soldering Temperature	20W/5 Seconds or 260C/3 seconds

Contact Ratings

Working voltage		24V	110V	220V
AC (50/60Hz)	Resistive	—	1.0A	0.5A
	Inductive	—	0.7A	0.5A
DC	Resistive	1.0A	0.2A	—
	Inductive	0.7A	0.1A	—

LED Ratings

Rated Voltage	Current
5V DC ± 5%	8mA AC: A, R, W, Y: 8mA G, S: 7mA
6V AC/DC (± 10%)	DC: A, R, W, Y: 6mA G, S: 5mA
12V AC/DC (± 10%)	AC: 9mA DC: 8mA
24V AC/DC (± 10%)	AC: 9mA DC: 8mA

How to Order




RJSPS [] A	—	□	□	□	□	□
Mounting Size	Operation Style	Operation Characteristic	Contact Structure	Colour	Voltage	
8mm 10mm	Momentary Latching	Round Square Rectangle Round (LED) Square (LED) Rectangle (LED)	Nil SPDT(1a+1b)	R Red G Green Y Yellow W White B Blue A Orange	24VDC 12VDC 6.3VDC 110VAC 220VAC	

RJSPS8A SERIES

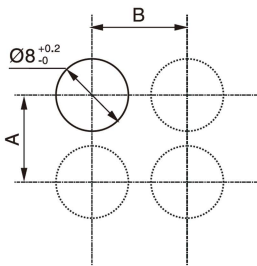
PUSH BUTTON SWITCH



8mm Push Button Switch

Product appearance	Operation	Illuminated type	Contact	Model	Colour	Rated Voltage
RJSPS8A - Round 	Momentary	Without LED	SPDT	RJSPS8A~ 211	R Red G Green Y Yellow W White B Blue	24VDC 12VDC 6.3VDC 110VAC 220VAC
		With LED	SPDT	RJSPS8A~ 271		
	Latching	Without LED	SPDT	RJSPS8A~ 311		
		With LED	SPDT	RJSPS8A~ 371		
RJSPS8A - Square 	Momentary	Without LED	SPDT	RJSPS8A~ 221	R Red G Green Y Yellow W White B Blue	24VDC 12VDC 6.3VDC 110VAC 220VAC
		With LED	SPDT	RJSPS8A~ 281		
	Latching	Without LED	SPDT	RJSPS8A~ 321		
		With LED	SPDT	RJSPS8A~ 381		
RJSPS8A - Rectangle 	Momentary	Without LED	SPDT	RJSPS8A~ 231	R Red G Green Y Yellow W White B Blue	24VDC 12VDC 6.3VDC 110VAC 220VAC
		With LED	SPDT	RJSPS8A~ 291		
	Latching	Without LED	SPDT	RJSPS8A~ 331		
		With LED	SPDT	RJSPS8A~ 391		

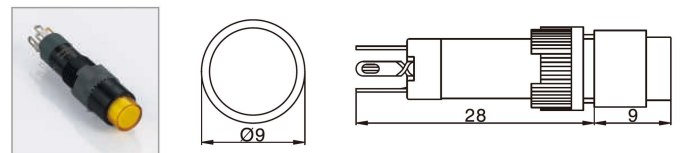
Installation Size



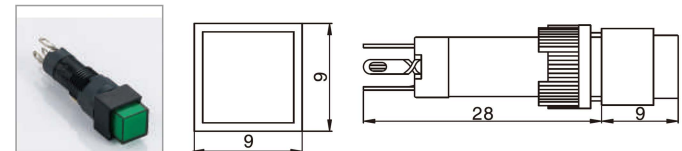
A	B
≥10mm	≥10mm
≥10mm	≥10mm
≥10mm	≥14mm

Drawing

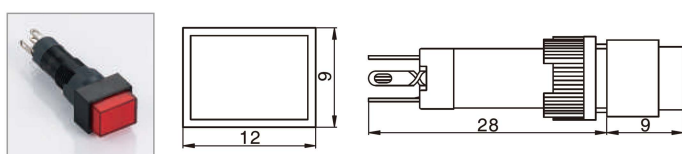
RJSPS8A - Round



RJSPS8A - Square

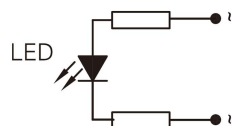
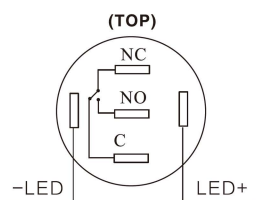


RJSPS8A - Rectangle



Terminal Style / LED Circuit

Push Button Terminal Style



12VDC, 24VDC, 110VAC, 220VAC