

RJSX03-22 SERIES

METAL PUSH BUTTON SWITCH



Contact Ratings

Rated insulation voltage		250V		
Heating current I _{th}		3A Temperature does not exceed the maximum allowed current		
Rated voltage		24V	110V	220V
Rated current	AC 50/60Hz	Resistive load	2A	-
		Inductive load	-	1A
	DC	Resistive load	0.7A	0.2A
		Inductive load	-	-
Contact material		Silver nickel oxide	Silver Plated Gold	

Switching Operation

Type	Sign	Diagram	Contact type	Terminal Description
No.2				

Explanation: Using two terminals, double-break and slow-motion contact. Y type NC switch can be made to order for individual product, pls check the product description.

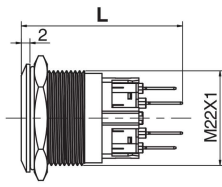
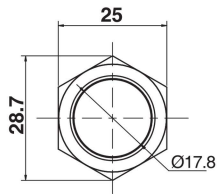
Product appearance	Illuminated type	Operation	Contact	Model	Crust Material
Flat round 	Without LED	Momentary	1NO+1NC	RJS103-22-F~67J	B-Brass BS- Brushed Steel BLK – Anodised Black NP – Nickel Plated Brass PS – Polished Steel CUSTOM FINISHES (subject to MOQ's) • RWB – Raw Brass • SLV- Natural Anodised Silver • PB – Polished Brass Effect • GLD – Anodised Gold Colour • YEL – Anodised Yellow • RED – Anodised Red • BLU – Anodised Blue • GRN – Anodised Green • BRZ – Antique Bronze Effect
			2NO+2NC	RJS203-22-F~67J	
		Maintained	1NO+1NC	RJS103-22A-F~67J	
			2NO+2NC	RJS203-22A-F~67J	
High round 	Without LED	Momentary	1NO+1NC	RJS103-22-H~67J	
			2NO+2NC	RJS203-22-H~67J	
		Maintained	1NO+1NC	RJS103-22A-H~67J	
			2NO+2NC	RJS203-22A-H~67J	
Domed round 	Without LED	Momentary	1NO+1NC	RJS103-22-B~67J	
			2NO+2NC	RJS203-22-B~67J	
		Maintained	1NO+1NC	RJS103-22A-B~67J	
			2NO+2NC	RJS203-22A-B~67J	

RJSX03-22 SERIES

METAL PUSH BUTTON SWITCH



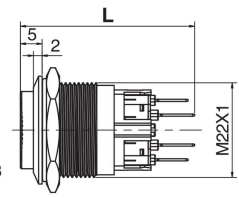
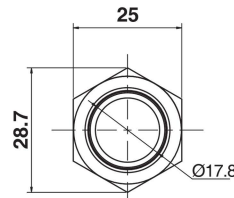
1Pole
2Pole



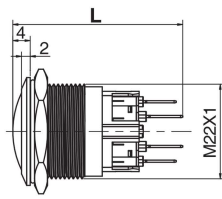
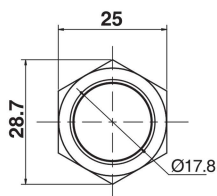
Momentary 37.15mm
Latching 42.5mm



1Pole
2Pole



1Pole
2Pole



Momentary 39.15mm
Latching 44.5mm

Wiring available subject to MOQ

