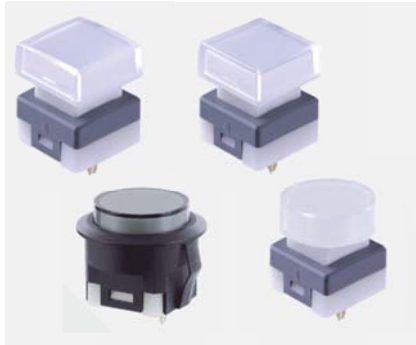


SPG4 SERIES

ILLUMINATED SILENT KEY SWITCH



General Specifications

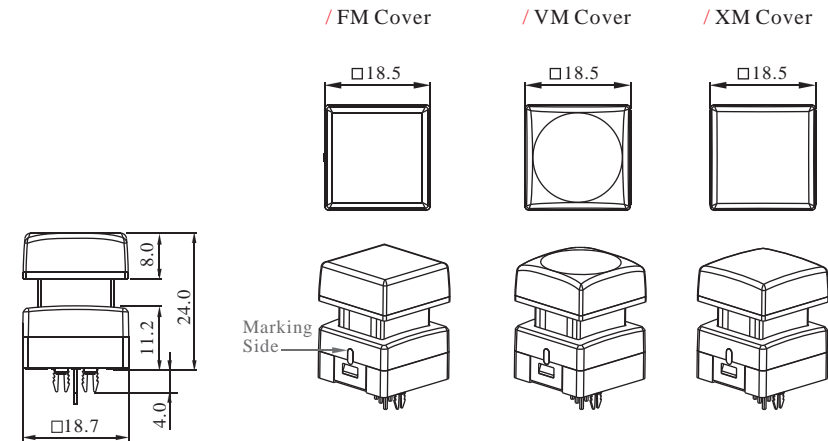
Current Rating :50mA
 Voltage Rating :48VDC
 Contact Resistance :100m Ohm (initial)
 Insulation Resistance :100M Ohm Min.
 Operating Force :250gf ± 50gf
 Total Travel :4.5mm±0.20mm
 Mechanical Life :5,000,000 cycles Min.
 Solder Specifications :260 °C for 3 seconds
 Function :Momentary(SPST)
 Operating Temperature :-25 °C ~ +70°C

Materials

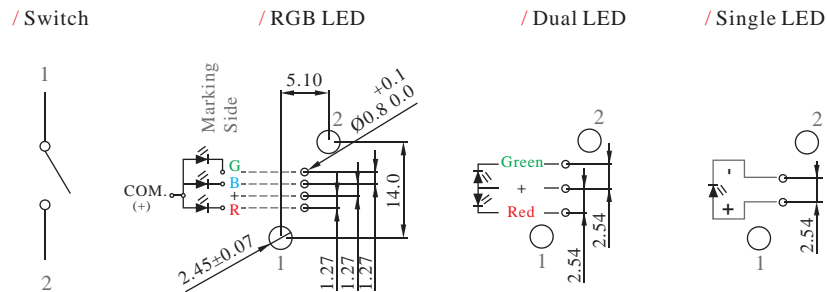
Cover :Polycarbonate (PC)
 Cap :Polycarbonate (PC)
 Reflector :Polyoxymethylen (POM)
 Base-Cap :Polyamide (PA)
 Moving contact :Phosphor Bronze with gold plating
 Base :Polyamide (PA)
 Terminal :Brass with gold plating
 Spring :Piano wires
 Rubber washer :NBR

PAT. US8,129,640
 PAT. I376716
 PAT. ZL 2010 1 0102778.5

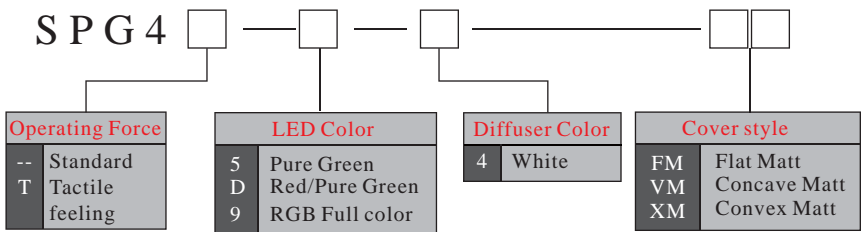
Dimension



PCB layout & Circuit Diagram



How to order



EXAMPLE:
 SPG4T-9-4-VM

SPG4 SERIES

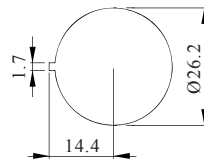
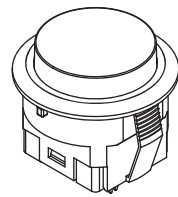
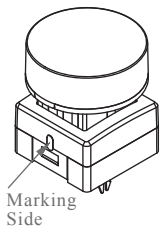
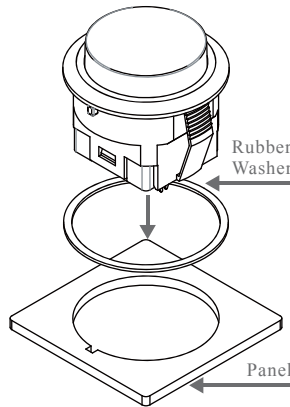
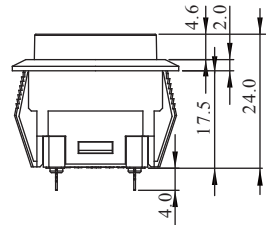
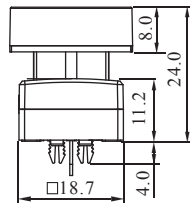
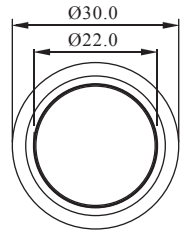
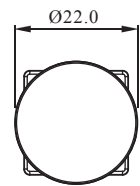
ILLUMINATED SILENT KEY SWITCH



Dimension of Round Cap

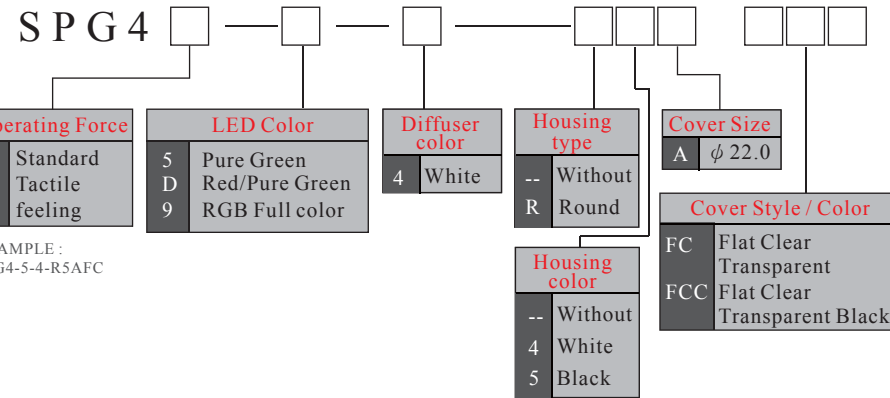
/ SPG4□-□-□-4-A□□□

/ SPG4□-□-□-4-R□A□□□



Panel cutting
Panel thickness:
1.0~3.2mm

How to Order (Round Cap)



EXAMPLE :
SPG4-5-4-R5AFC